



Concrete bench 07

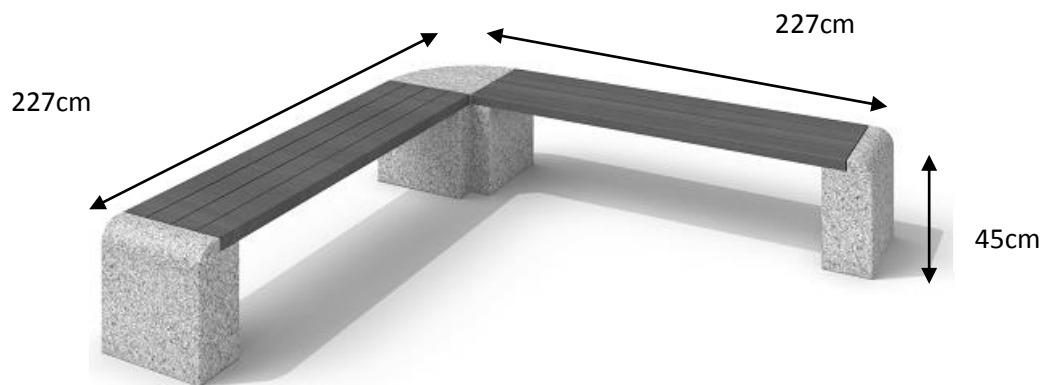
Code – ST-01-CR-003

Dimensions – 2,27 x 2,27 x 0,45 m

Weight – 400kg

Material – concrete, wood spruce

Size of structure – 4-8 mm



Colors of wood

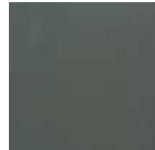
WOOD



TRANSPARENT WHITE



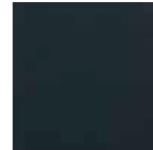
WOODEN GREY



GREY



TRANSPARENT BLACK



BLACK AZURE



STRAW



NATURAL OAK



EXOTIC WOOD



CHESTNUT



GREEN AZURE

Colors of concrete

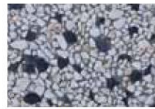
K SIZE



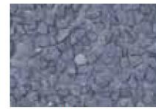
K-100



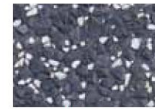
K-100B



K-102



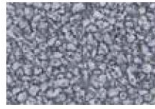
K-200



K-201



K-202



K-400



K-402



K-500



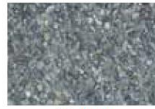
K-500P



K-560



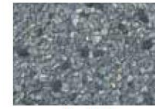
K-590



K-600



K-601



K-602